

Liquid Flow Controller FCL-200

new

FCL-200 is a controller developed for liquid flow control having all of its areas in contact with liquid made of Teflon. This controller is most suitable for controlling semiconductor process fluid of ultrapure water and fluids in such fields as pharmaceutical and food industries.



- All areas in contact with liquid are made of Teflon, which enables
- The newly developed dedicated valve structure produces almost no particles.
- The high temperature type is capable of controlling fluids as high as 80°C.
- Digital control via RS232C is possible.

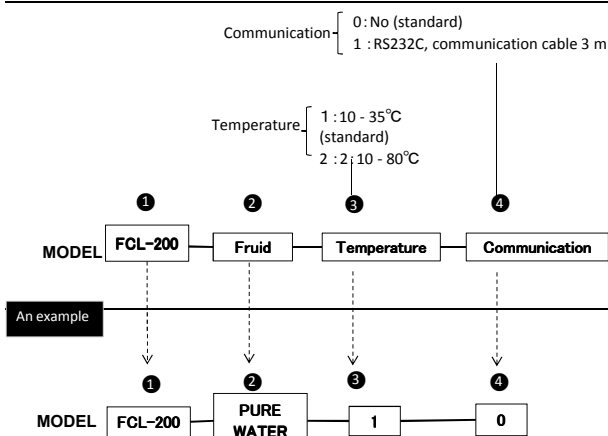
■ Standard specifications

• Applicable fluid	: Water, pure water, ultrapure water (For other fluids, please contact us.)
• Flow range	: 0.4 - 2.0 L/min (Operating differential pressure 150 kPa min.)
• Allowable fluid temperature	: 10 - 35°C (normal temperature) (Optional: 10 - 80°C)
• Measurement accuracy	: ±1%FS (at 25°C, pure water calibration)
• Repeatability	: ±0.7%FS (at 25°C, pure water calibration)
• Response	: Valve close → 100%F.S.: 2 sec. max., 100%F.S. → valve close: 2 sec. max. (at 25°C, pure water, differential pressure = 150 kPa)
• Materials of areas in contact with liquid	: PTFE, PFA
• Supply pressure	: 0.15 - 0.35 MPa (Pump pulsation ±50 kPa max.)
• Proof pressure	: 0.6 MPa (at 25°C)
• Process connection	: 3/8 inch (φ9.52×6.35) SUPER 300 P type joint made by NIPPON PILLAR PACKING
• Dedicated power cable length	: 3 m
• Cable sheath	: PVC
• Structure	: Equivalent to IP64 (Electrical part)
• Valve structure	: Normally open
• Ambient temperature	: 0 - 50°C (no condensation)
• Ambient humidity	: 10 - 85%RH (no condensation)
• Installation posture	: Free (Horizontal installation recommended)
• Weight	: Approx. 1.3 kg

■ Electrical specifications

• Measurement system	: Karman vortex type
• Input signal	: 4-20 mA (0-2 L/min)
• Output signal	: 4-20 mA (0-2 L/min)
• Power supply	: 24 VDC±5%
• Power supply voltage ripple	: ±10% max.
• Current consumption	: Approx. 200 mA
• Communications function (Optional)	: RS232C (Cable 3 m)

■ Ordering instructions

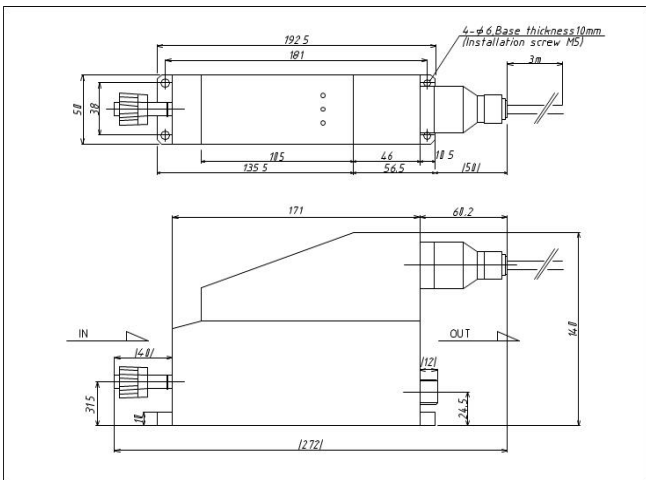


Note: This product is not designed for shutoff. If shutoff is required, install a dedicated shutoff valve before the controller. Install a filter before the controller to prevent intrusion of foreign matter.

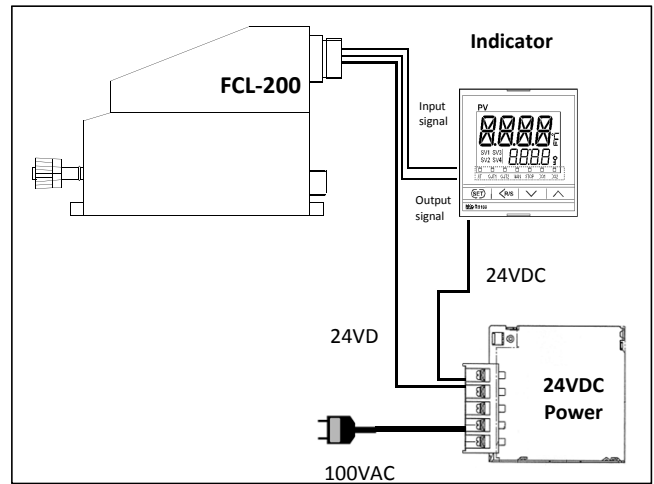
If the mixture of bubbles in the fluid being used exceeds 5%, the output flow rate accuracy may deteriorate. Exercise caution.

The specifications are subject to change without notice.

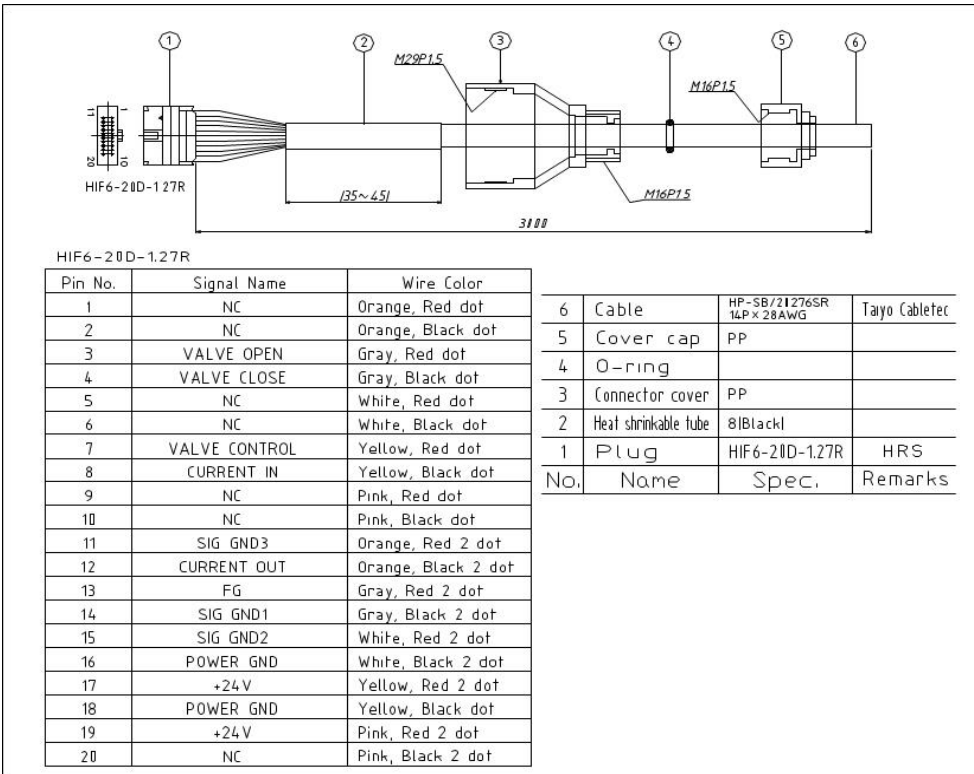
■ External view



■ An example of application



■ Dedicated power cable (Wiring diagram)



Kojima Instruments Inc.(KOFLOC)

URL . <http://www.kofloc.co.jp>

